

Temperature & Humidity Sensor

User manual



Hafele Smart Living



Please read the instruction manual carefully before using the product

1. Product specification

Product name	Temperature & Humidity sensor
Power specification	CR2450 ,1pc (replaceable)
Temperature detection range	-20°C - 60°C
Humidity detection range	0% - 100% RH (No condensation)
Wireless connection	Zigbee

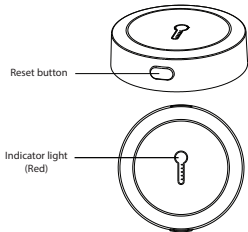
2. Packing list

- Temperature & Humidity sensor x1
- Instruction manual x1

3. Product description

HÄFELE

Temperature & Humidity sensor detects temperature and humidity in the environment in the real time, and combines other devices to design and implement smart application scenarios

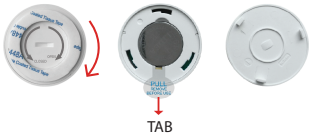


4. Installation

HÄFELE

Turn the back shell clockwise to open the back shell, pull out the "Pull" tab on the sensor to activate the pre-installed battery.

Peel the tape liner off the back of the temperature and humidity sensor, stick the temperature and humidity sensor on the wall or area you want to monitor

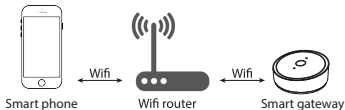


Tips: After the temperature and humidity sensor sticks on the wall, when you need to change the battery, please turn the front shell clockwise to open the sensor to change the battery.



5. Preparation for use

- Mobile phone is connected to Wifi



Ensure that the product is within the effective coverage of the Gateway to ensure an effective connection between the product and the Gateway.

** Make sure the Gateway has been added.*

5. Preparation for use

- Download and open the APP

In the App Store, search for “Hafele Smart Living” or scan the QR code on the manual to download and install the smart APP.

If you are downloading this App for the first time, please tap the “Sign up” button to register your account. If you are already have an account, click the “Login” button

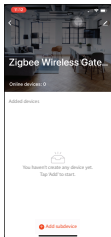


Hafele Smart Living

6. Network setting

Please confirm that the battery is loaded while ensuring that the phone is connected to the network and the smart gateway has been added successfully

Open the APP and tap "Add subdevice" on the Gateway screen.



6. Network setting

Press and hold reset button for 5 seconds. The indicator will start to flash. Once the temperature and humidity sensor successfully connects, the light will turn off.

Press "Done" to back to the main screen. Touch the temperature and humidity sensor icon, you can see the temperature and humidity which you are monitoring.

